

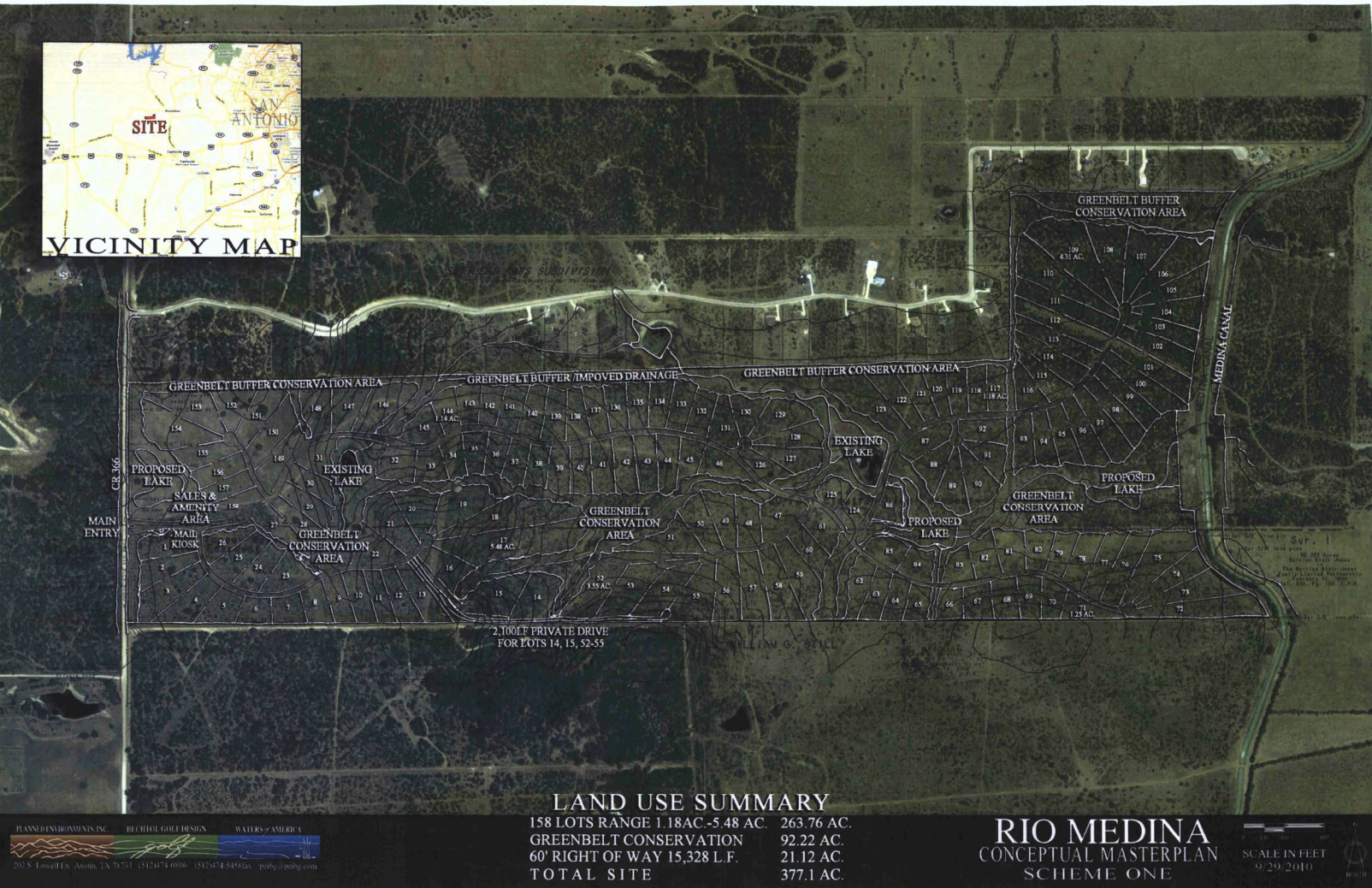
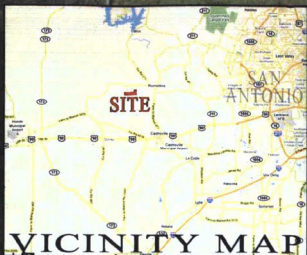
LAND FOR SALE



CR 366 West of Rio Medina

377 ACRES OF VACANT LAND

\$9,500/Acre



LAND USE SUMMARY		
158 LOTS RANGE 1.18AC.-5.48 AC.	263.76 AC.	
GREENBELT CONSERVATION	92.22 AC.	
60' RIGHT OF WAY 15,328 L.F.	21.12 AC.	
TOTAL SITE	377.1 AC.	

RIO MEDINA
CONCEPTUAL MASTERPLAN
SCHEME ONE

SCALE IN FEET
9/29/2010

PRESENTED BY:

Scott Covington
direct: 713.800.3150
cell: 713.858.1115
scovington@secovington.com

S.E. Covington & Company
4669 Southwest Freeway, Suite 800
Houston, Texas 77027
713.974.7600
www.secovington.com



LAND FOR SALE

CR 366 West of Rio Medina

377 ACRES OF VACANT LAND

\$9,500/Acre



Description:

Beautiful rolling country with large trees in Eastern Medina County adjacent to very active Western Bexar County. This property has magnificent views, water features, elevation changes, electricity, water, road frontage, and is in a proven area and ideal for development.

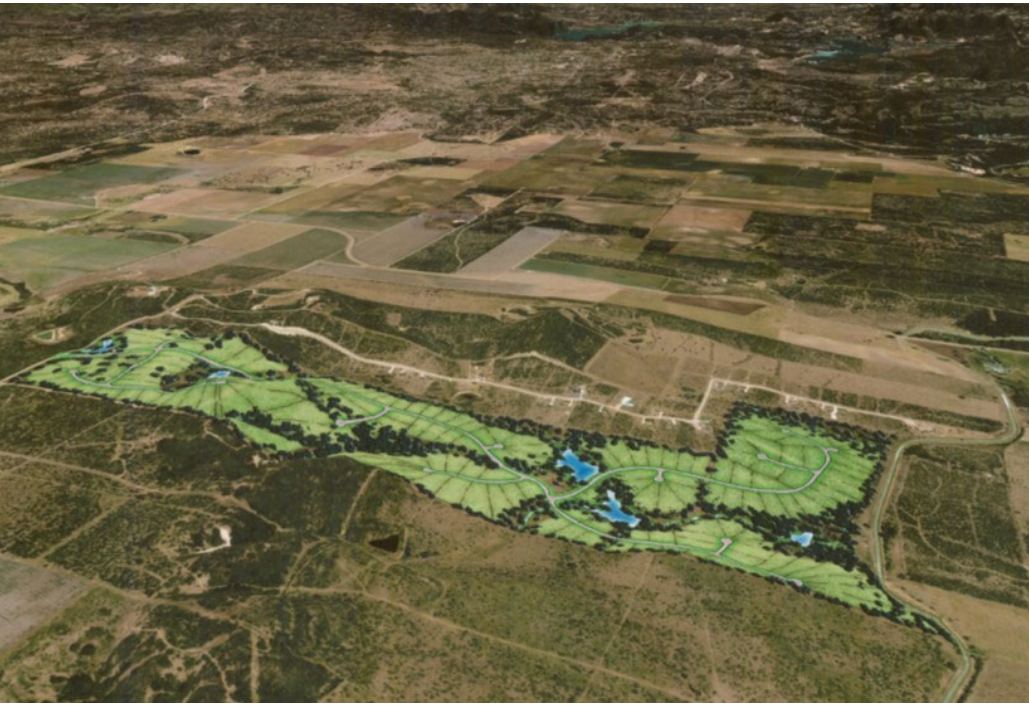
Property is located in Medina County, 14 miles from 1604/Potrero Super Wal-Mart-HEB Plus, 18 miles to Sea World, new hospitals, New Microsoft facility, 960,000 sq ft Alamo Ranch Shopping Center, Hwy 90/Loop 410, 20 miles/minutes Downtown San Antonio, 30 miles/minutes via US 90 Historic Castroville, 10 miles/minutes Lake Medina, 11 miles/minutes.

Dynamic subdivision property which has been concept planned by Roy Bechtol/Planned Environments. Several scheme versions as well as aerial visuals will convey with sale of property.

LAND FOR SALE



377 ± Acres | CR 366 West of Rio Medina, Medina County



Description:

*10 Minutes from TRP Microsoft Construction Site

- ◇ 10 Minutes to US 90 Castroville
- ◇ 12 Minutes from Medina Lake, Medina County
- ◇ Paved Road Frontage 14 Minutes from Loop 1604 San Antonio

Description:

- ◇ Site has been planned for 241 lots with minimum lot size of 1.3 acres
- ◇ The subject property consists of 377.10 acres of level to rolling land located along CR 366 with good hilltop views throughout
- ◇ Utilities available include electricity and telephone as well as public water provided by Yancey WSC
- ◇ Sewer is provided by septic system
- ◇ Property not located within the 100 year flood plane
- ◇ Approx. 3,500 feet of access frontage on beautiful Medina Canal for fishing, swimming, canoeing, tubing and picnicking

PRESENTED BY:

Scott Covington

direct: 713.800.3150

cell: 713.858.1115

scovington@secovington.com

S.E. Covington & Company

4669 Southwest Freeway, Suite 800

Houston, Texas 77027

713.974.7600

www.secovington.com

